

RESEARCH

Open Access



Effects of hPMSCs on granulosa cell apoptosis and AMH expression and their role in the restoration of ovary function in premature ovarian failure mice

Hongqin Zhang^{1†}, Qianqian Luo^{1†}, Xueyan Lu², Na Yin², Dongli Zhou³, Lianshuang Zhang¹, Wei Zhao¹, Dong Wang², Pengchao Du², Yun Hou², Yan Zhang^{4*} and Wendan Yuan^{2*}

Abstract

Background: This study was performed to determine the effects of human placenta mesenchymal stem cell (hPMSC) transplantation on granulosa cell apoptosis and anti-Müllerian hormone (AMH) and follicle-stimulating hormone receptor (FSHR) expression in autoimmune drug-induced premature ovarian failure (POF) mice. The aim of this research is to investigate the mechanisms of hPMSCs on ovarian reserve capacity.

Methods: The POF mice model was established by injection of zona pellucida 3 peptide (pZP3). hPMSC transplantation was conducted by intravenous injection into mice following pZP3 treatment. The follicle number was examined by histopathology. The serum levels of FSH, LH, E₂, AMH and anti-zona pellucida antibody (AzpAb) were measured by enzyme-linked immunosorbent assay. AMH and FSHR expression in the ovary was analyzed by immunohistochemistry and western blot analysis. Granulosa cell apoptosis of the ovaries was examined by In Situ Cell Death Detection Kit. Granulosa cells were isolated and treated with SiAmh interference and hPMSC supernatant to observe the effects of AMH expression on granulosa cell apoptosis in vitro.

Results: The results showed that hPMSC transplantation can significantly recover the estrus cycle in the POF group. Morphological staining showed that the basal follicles and sinus follicles after hPMSC transplantation were higher in POF mice than in those without treatment, and the follicle number was significantly decreased with atresia. The serum levels of FSH, LH and AzpAb in the hPMSC transplantation group were reduced considerably, but the E₂ and AMH levels were significantly increased. After hPMSC transplantation, the AMH and FSHR expression in ovarian tissue was significantly higher than in the POF group as determined by immunochemistry and western blot analysis. The FSHR expression was shown in granulosa cells only, and FSHR expression increases with AMH expressed in the ovary; granulosa cell apoptosis was decreased following hPMSC transplantation. The same results were observed from the in-vitro study.

Conclusions: hPMSC transplantation can significantly improve the serum levels of high gonadotropin and low estrogen of POF mice, promote follicular development, inhibit excessive follicular atresia and granulosa cell apoptosis, and improve the ovarian reserve capacity. The mechanism may be achieved by increasing the expression of AMH and FSHR in ovaries.

Keywords: Placenta, Mesenchymal stem cell, Premature ovarian failure, Granulosa cells, Apoptosis, Anti-Müllerian hormone, Follicle stimulating hormone receptor

* Correspondence: yanzhang@iozac.cn; wendany@sohu.com

†Equal contributors

⁴State Key Laboratory of Stem Cell and Reproductive Biology, Institute of Zoology, Chinese Academy of Sciences, Beijing 100101, China

²School of Basic Medical Sciences, Binzhou Medical University, Yantai 264003, China

Full list of author information is available at the end of the article



Background

Premature ovarian failure (POF) is a disease of ovarian dysfunction that seriously affects women's physical and mental health, which refers to amenorrhea, ovarian atrophy, sexual hypoactivity and fertility decline after puberty of women and before the age of 40, and may lead to a series of syndromes of osteoporosis and cardiovascular disease [1–3]. The pathogenesis of this disease has not yet been understood fully. Ovarian failure is shown as a decline in ovarian reserve capacity [4]. Evaluation of ovarian reserve capacity in the clinic is of great importance for early detection of POF, prediction of fertility potential and menopause age. Reduced ovarian reserve is often referred to as a decreased number or quality of follicles and oocytes [5]. Folliculogenesis was related to anti-Müllerian hormone (AMH) expressed in the granulosa cells. AMH regulates the recruitment of follicles by limiting the number of oocytes recruited and growing follicles [6]. Therefore, AMH is emerging as a novel ovarian test marker involved in the pathogenesis of POF.

Currently, the prevention and treatment of POF are extremely difficult. The most commonly used hormone replacement therapy cannot effectively recover ovarian function [7]. Mesenchymal stem cells (MSCs) are the adult stem cells that have been studied in recent years and used to treat many diseases. MSCs can be isolated from a variety of tissues, especially human placenta. The human placenta-derived mesenchymal stem cells (hPMSCs) have gained wide attention due to their convenient isolation, less virus infection and low immunogenicity [8]. However, the application of hPMSC transplantation in the treatment of autoimmune ovarian injury and its effect on ovarian reserve capacity has not been investigated widely.

The study was performed on the POF mice model induced by zona pellucida glycoprotein 3 peptide (pZP3) injection. In this article, the effects of human placental mesenchymal stem cell therapy on ovarian reserve capacity, granulosa cells and related AMH and FSHR were studied. The data from this study suggested that hPMSCs provide a promising therapeutic method for patients with POF in the clinic.

Methods

Experimental animals and reagents

Female mice (Balb/c) aged 6–8 weeks were obtained from Ji'nan Pengyue Experimental Animal Breeding, Ltd (Shandong, China). Mice with a weight of 18–22 g were assigned randomly to the control group ($n = 24$), POF group ($n = 24$) or POF + hPMSCs group ($n = 24$). All animals were housed in the animal facility and were fed a standard pellet diet with free access to water. All of the experimental procedures were approved by the Institutional Animal Care and Use Committee at Binzhou

Medical University. The study was conducted according to the National Research Council Guide for Care and Use of Laboratory Animals.

Zona pellucida glycoprotein 3 peptide (pZP3) was synthesized by an automatic peptide synthesizer (Zhongtai Biochemical Co. Ltd, Hangzhou, China), and 95% peptide purity was determined by HPLC analysis. The amino acid composition was checked by amino acid analysis and the amino acid sequence of the murine ZP330–342 peptides used in this study was NSSSSQFQIHGPR. The reagents used in the study include complete Freund's adjuvant (CFA), Freund's incomplete Adjuvant (FIA; *Mycobacterium tuberculosis* H37RA strain, 0.16 mg/mouse) (Sigma, USA), rabbit anti-mice FSHR antibody (Santa Cruz, USA) and the ELISA kit (Beijing Huaying Institute of Biological Technology).

Establishment of the POF mice model

The pZP3-induced POF mice model was established according to the literature [9–11]. Each mouse was injected subcutaneously with 150 μ l pZP3 at the foot, abdomen and back. After 2 weeks, pZP3 emulsified in FIA was injected subcutaneously. One week following the treatment of pZP3 with FIA, blood samples were collected by tail vein puncture. AZPAb was measured by ELISA in POF mice to confirm the successful injection of pZP3. In the control group, the expression of AZPAb was negative.

One week following the successful establishment of the POF model characterized by irregular estrous cycles, 1×10^6 hPMSC cell suspension at the third generation was injected intravenously into mice through the tail vein according to a study published previously [12]. Two weeks after hPMSC transplantation, the blood and ovary tissue of POF + hPMSCs group mice were obtained for further experiment.

Estrous cycle examination

Vaginal smear was performed under light microscopy. The type of estrous cycle was determined as shown by the proportions of nucleated and keratinized epithelial cells and leukocytes. The level of cycle abnormality (I–IV) was graded as follows: I, normal; II, regular cycles with a shortened estrus; III, irregular cycles with a prolonged diestrus and normal or prolonged estrus; IV, no cyclicity. Estrous cycle disorder is a distinguishing characteristic of ovarian function failure.

Enzyme-linked immunosorbent assay

At the end of the study, blood samples were obtained from eyeball veins and centrifuged at $3220 \times g$ for 15 min. FSH, LH, E_2 , AMH and AzipAb levels in the serum were measured by ELISA kit (Lengton, Shanghai, China) according to the manufacturer's instructions.

Ovarian follicle counting and morphological analysis

At the end of the study, the mice were euthanized and ovaries were collected, which were fixed and stained with H&E for histopathology examination under light microscopy. Only the follicles containing an oocyte with a clearly visible nucleus were counted. Furthermore, the follicles were classified as primordial, primary, secondary and atresia follicle, according to the method described previously [13, 14]. Five slides were selected randomly in each group and five nonrepetitive views on each slide were selected for statistical analysis.

Immunohistochemistry

The bilateral ovaries were fixed in the paraformaldehyde solution (4%), and then embedded in paraffin wax. The ovary tissues were sectioned at 4 μm . The slides were dewaxed in distilled water and incubated with the primary polyclonal rabbit antibodies of AMH and FSHR. The concentration of AMH and FSHR was 1:150 and antibodies were incubated for 12 hours at 4 °C in a humidity environment. Biotinylated secondary antibody anti-rabbit IgG was used on the sections for 1-hour incubation at 37 °C. Five sections on each slide were selected randomly for examination.

The German immunoreactive score criteria (IRS) were used to score the staining results. Briefly, staining signal intensity was graded as “0” (negative), “1” (weak), “2” (moderate) and “3” (strong); the extent of staining cells was graded as “0” (<5%), “1” (5–25%), “2” (25–50%), “3” (50–75%) or “4” (>75%). Values of staining intensity and staining extent were multiplied as a final IR score [15].

Western blot analysis

The mice were anesthetized and bilateral ovaries were collected. The tissue homogenates were centrifuged at 12,000 $\times g$ at 4 °C for 10 min. Bradford's method was used to measure the protein concentration of supernatants [16]. The total proteins were subjected to electrophoresis in 8% SDS-PAGE gels and transferred onto a PVDF membrane. Subsequently, membranes were probed overnight at 4 °C with anti-FSHR (1:100), anti-AMH (1:1000) and anti-GAPDH (1:800; Goodhere, China) polyclonal antibodies. At room temperature, the horseradish peroxidase-conjugated secondary antibody (1:5000) was incubated on the membrane for 1 hour. The ECL Plus western blot detection system (Thermo Scientific) was used to detect the immunoreactive signals.

In-situ cell death detection

Apoptosis in the granulosa cells was examined by the In Situ Cell Death Detection Kit (Roche, USA) on the basis of the manufacturer's instructions. DAPI was used to stain the nucleus, and the staining signals of apoptosis were evaluated using fluorescence microscopy (Leica,

Germany). Additional tissue sections were added for the negative and positive labeling controls.

Isolation and culture of hPMSCs

The use of human placenta tissue was approved by the Institutional Ethics Committee. hPMSCs were isolated and cultured according to Chen [8]. The specific contents were attached to the (Additional file 1). The membrane and intracytoplasmic molecular markers of hPMSCs were examined using flow cytometry (FCM) to confirm the phenotype of the cells [8].

Isolation, culture and identification of granulosa cells

The Balb/c mice in the control group were administered 20 U PMSG (5000 U/5 ml). After 48 hours, the ovaries were collected and granulosa cells were isolated mechanically according to a previous study [17]. The culture solution contains DMEM medium 1 \times (1:1) with 10% FBS, FSH 100 U and 1% antibiotic, and the granulosa cells were incubated at 37 °C with 5% CO₂ for 48 hours. After incubation, cell numbers were determined using a hemocytometer at a concentration of 10,000 cells per well in a culture plate. The medium was then removed using a pipette and washed with PBS. The plates were incubated with the primary polyclonal rabbit antibodies: anti-FSHR (1:150) for 12 hours at 4 °C in a humidity chamber. Biotinylated secondary antibody anti-rabbit IgG (Dylight 549, 1:300) was applied to the sections for 30-min incubation at 37 °C. After DAPI transfused the nucleus, the signals from each staining were examined by fluorescence microscopy.

SiAmh interference and hPMSC supernatant treatment

For examining the effects of AMH on granulosa cell apoptosis, treatment was conducted using SiAmh interference for 24 hours. The SiAmh interference study was performed according to the kit instruction when the cell growth reached about 80%. After interference, regular culture medium was replaced 6–8 hours later and cells were cultured for 48 hours. The SiAmh + hPMSCs groups were added to the culture medium which mixed with the hPMSC supernatant at a ratio of 1:1. After 48-hour cell transfection, total RNA was extracted using the Trizol method. After reverse transcription, PCR was used to determine the expression of AMH mRNA in the granulosa cells. Total RNA (1 μg) was applied to the reverse transcription. The reaction condition was as follows: 10 min at 65 °C (pre denaturation), 60 min at 50 °C (initial denaturation), 5 min at 85 °C (amplification). PCR amplification was performed according to the steps of Roche fast start universal SYBR Green master (ROX). The primer sequences are as follows: AMH-F, 5'-TGCTAGTCCTACATCTGGCTGA-3'; and AMH-R, 5'-GTCCAGGGTATAGCACTAACAGG-3'.

Cell apoptosis was detected by flow cytometry. After 48-hour cell transfection, the cells were collected and digested with pancreatic enzymes and washed twice with cold PBS. Then 500 ml Annexin V Binding Buffer cell suspension, 5 μ l FITC Annexin V and 5 μ l PI were added. The cells were then cultured at room temperature for 15 min for flow cytometry analysis within 1 hour.

Data analysis

Statistics were expressed using the mean \pm SEM and analyses were performed with SPSS 13.0 software. One-way analysis of variance (ANOVA) was used between the three groups and statistically significant difference was expressed as $P < 0.05$.

Results

General status and body weight change of mice

There was no significant weight change among the three groups before pZP3 treatment. Following pZP3 treatment, a statistically considerable difference between the three groups was observed ($P < 0.01$), as shown in Fig. 1a. There was a significant weight loss in the POF group compared to the control and hPMSC groups. The average weight of mice in the POF group was 21.71 ± 0.96 g as compared to 23.38 ± 1.41 g in the control group.

hPMSC phenotype characterization

Cells isolated from human placenta began to form individual colonies after 7–10 days of inoculation. The morphology of cells appears similar to the fibroblasts, as shown in Fig. 2b. These adherent cells can be passaged easily by multiple trypsinization. A homogeneous cell population was observed after three passages. Even following 10 passages, the cells still retain normal morphology. The phenotype analysis by immunofluorescence showed that the cells express positive mesenchymal progenitor markers with CD73, CD90 and CD105. The hematopoietic cell surface markers CD14, CD34 CD19 and HLA-DR are shown negative (Fig. 2a). In an ex-vivo conditional culture system, hPMSCs can be induced to develop into different lineages. In osteoblastic

induction medium, von Kossa staining showed that calcium was deposited in the cells (Fig. 2c). In adipogenic induction medium, fat globules were present in the cytoplasm, and Oil Red O staining was positive (Fig. 2d). The results of this part were in conformity with the previous literature report on the confirmation of hPMSC phenotype characterization [8].

Effects of hPMSC transplantation on estrous cycles

The estrous cycles were examined over a 5-week period following pZP3 treatment. Regular estrous cycles in the control group were shown in 86.96% of mice and lasted 4–6 days, which includes proestrus for 1 day, estrus for 1–2 days, metestrus for 1 day and diestrus for 1–2 days (Fig. 3a–d). However, the significantly irregular estrous cycles were observed in POF mice as shown in Fig. 3e, f. Only 14.29% of mice showed a regular cycle in the POF group. However, following hPMSC transplantation, 62.5% of mice in the POF group showed a regular estrous cycle. The normal estrous cycles were significantly higher as compared to POF mice ($P < 0.01$). The results indicated that following pZP3 treatment, ovarian function was injured and the POF mice model was established successfully due to ovarian injury. After hPMSC transplantation, ovarian function has been significantly improved as seen in the increase of the normal estrous cycle.

The serum of FSH, E₂, LH, AMH and AzpAb levels

As shown in Fig. 4, following pZP3 treatment the serum gonadotropin including FSH and LH and AZPAb levels in POF mice were higher but E₂ and AMH levels were lower than the control group. Statistically significant difference between two groups at the same time was expressed as $P < 0.01$. Compared with the POF group, the serum E₂ and AMH levels were increased but gonadotropin and AZPAb levels were decreased after hPMSC transplantation ($P < 0.001$).

Histological examination and follicle count

Most healthy follicles, including primordial follicles, primary follicles, secondary follicles and atretic follicles, were observed in the ovaries of the control group

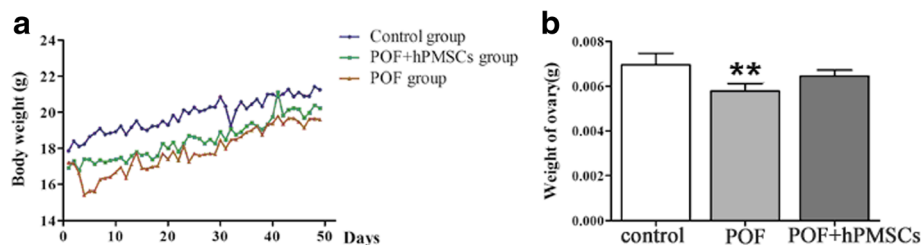


Fig. 1 a Body weight (g) and b ovary weight (g) of the three groups before and after pZP3 treatment compared at the same time. $**P < 0.01$. hPMSC human placenta mesenchymal stem cell, POF premature ovarian failure

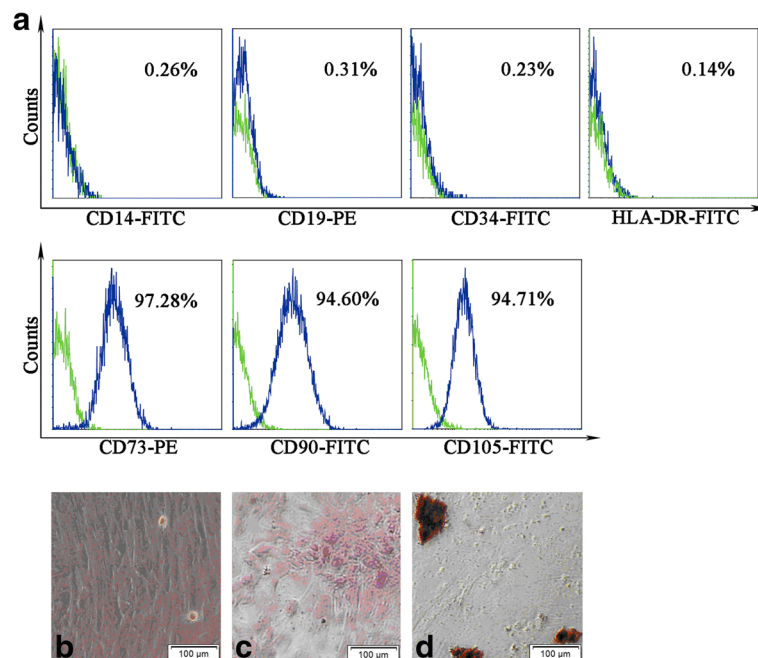


Fig. 2 Confirmation of hPMSC characteristics by cell surface marker staining and differentiation capability of cells. Surface markers of hPMSCs measured by flow cytometry. **a** Green line in each histogram represents isotype control staining; specific expression of indicated cell surface marker presented as blue histograms. **b–d** Cells cultured under various conditions to differentiate to osteoblast or adipogenesis cells. **b** Normal hPMSCs show fibroblast-like morphology. **c** Osteoblasts confirmed by Alizarin Red staining; dark red staining shows calcium deposition. **d** Adipogenesis confirmed by accumulation of neutral lipid vacuoles inside cells with Oil Red O stain. Scale bar: 200 μm . Magnification $\times 200$

(Fig. 5a). In contrast, the ovaries of pZP3 immunization mice were withered with most mesenchymal cells in a fibrous matrix. The number of follicles was counted at every stage (atretic or normal follicles) among the three groups. The numbers of follicles at any stage were decreased compared to the control group. Granulosa cells were arranged irregularly and lymphocyte infiltration was observed among the follicles (Fig. 5b). The morphological changes of the hPMSC treatment group were better than the POF group (Fig. 5c). The results showed a considerably lower number of atretic follicles but more normal follicles in the ovaries of the hPMSC transplantation group than in the POF group.

Expression of AMH and FSHR

Expression of AMH and FSHR was detected by immunohistochemical analysis. It was noted that most atretic follicles can be observed. The data showed that the expression of AMH and FSHR was decreased in ovaries of pZP3-induced POF mice compared to the control group ($P < 0.05$). The positive cells for AMH mainly occurred in the preantral and small antral follicles. In comparison, the majority of healthy follicles were observed in the ovaries from the POF + hPMSCs group, with a significantly increased secretion of AMH and FSHR (Fig. 6d, h).

Furthermore, the protein expression of AMH and FSHR in the ovaries was measured by western blot analysis. The data showed that AMH and FSHR expression in the ovarian tissues of the POF group was decreased extensively compared to the control group. After hPMSC treatment, AMH and FSHR expression was significantly increased in the POF group as revealed in Fig. 7.

Granulosa cell apoptosis

Apoptosis of granulosa cells is close to the development of follicular atresia. The results revealed that the number of apoptotic cells in the POF group was significantly increased compared to the control group (Fig. 8). However, after treatment with hPMSCs, the apoptosis numbers of granulosa cells were significantly decreased. The data suggest that apoptosis of granulosa cells plays an important role in the development of ovarian function failure in POF mice. hPMSC implantation could inhibit cell apoptosis to recover ovarian function.

Granulosa cell culture and identification

The granulosa cells were isolated from ovarian tissues. Cell morphology is shown in Fig. 9. The morphology of the granulosa cells was round and the cells were adherent after 24 hours, exhibiting polygonal and fiber-like structures. After follicle-stimulating hormone receptor (FSHR) immunostaining, GCs were stained red with

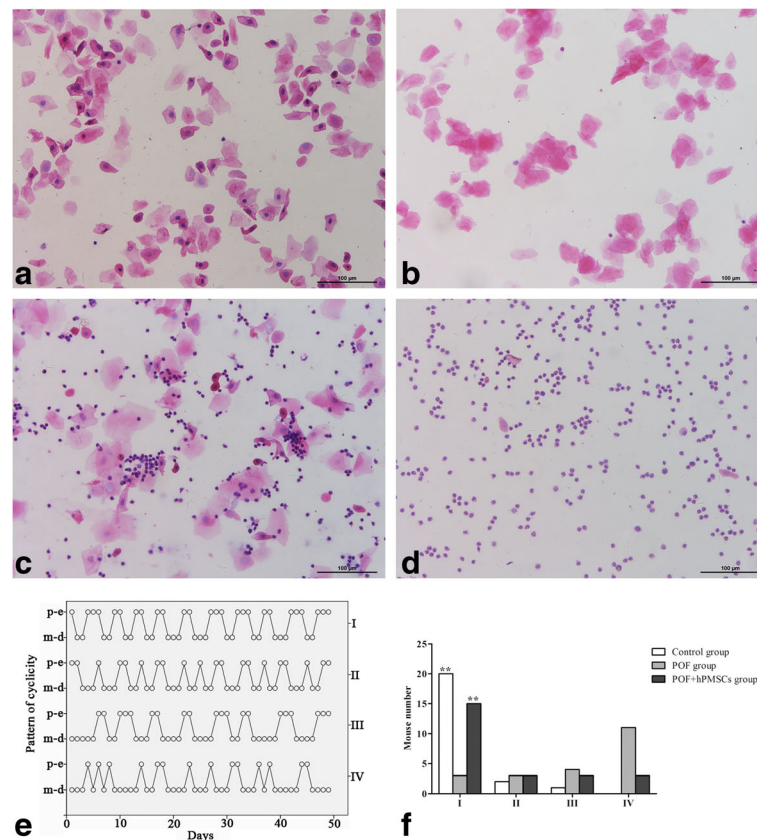


Fig. 3 Effects of hPMSC transplantation on estrous cycles for pZP3-induced POF mice. Normal estrous cycles: **a** proestrus, **b** estrus, **c** metestrus, **d** diestrus. **e** Four patterns of estrous cycles were graded with the severity of abnormality (I–IV) as follows: I, normal; II, regular cycles with a shortened estrus; III, irregular cycles with a prolonged diestrus and normal or prolonged estrus; IV, no cyclicity. y axis represents the cycle day in proestrus or estrus (p-e) and metestrus or diestrus (m-d). Each circle (o) represents one mouse. Illustration is only represented by a mouse and the main purpose is to show the change of estrus cycle. **f** Total numbers of mice from each group categorized into the various estrous patterns (I–IV). ** $P < 0.01$ indicates the statistically significant difference of the estrous cycle in mice with and without hPMSC transplantation. Data presented as mean \pm SD ($n = 24$). hPMSC human placenta mesenchymal stem cell, POF premature ovarian failure

Dylight 549, which accounted for approximately 80–85% of the adherent cells. The cells stained with Dylight 549 were the GCs, indicating that GCs derived from mice were successfully cultured in vitro.

SiAmh interference and hPMSC supernatant on apoptosis

To further clarify the effects of AMH and supernatant of hPMSCs on granulosa cell apoptosis, SiAmh interference was involved in the granulosa cell culture and apoptosis of granulosa cells was detected. Compared with the control group, the Amh mRNA level was significantly decreased in SiAmh groups as shown in Fig. 10a. After staining with Annexin V-FITC and PI in granulosa cells, the apoptotic cells were counted by flow cytometry. Apoptosis cells are shown at the late stage (x axis) and the early stage (y axis). The percentage of apoptotic granulosa cells (shown in Fig. 10c–e) are $13.35 \pm 1.25\%$ in the control group, $30.63 \pm 1.21\%$ in the SiAmh group and $23.51 \pm 1.67\%$ in the SiAmh + CM group,

respectively. The apoptosis rate in the SiAmh group was significantly higher than in the control group ($P < 0.01$). However, the apoptosis rate of granulosa cells was significantly decreased following supernatant of hPMSC treatment ($P < 0.01$).

Discussion

POF, 1–3% of adult women being affected [2], has a profound impact on physical and mental health. At present, hormone replacement therapy (HRT) has been applied in the clinic to treat patients with POF [7]. However, HRT not only has noticeable side effects, but also could increase the risk of gynecological tumors with long-term application. Moreover, HRT neither inhibits the continuous rise of FSH nor fundamentally repairs the impaired ovarian function. In recent years, much more attention had been paid to research into mesenchymal stem cells (MSCs) for repair after injury. The research has shown that MSCs were located in the amniotic fluid, amniotic

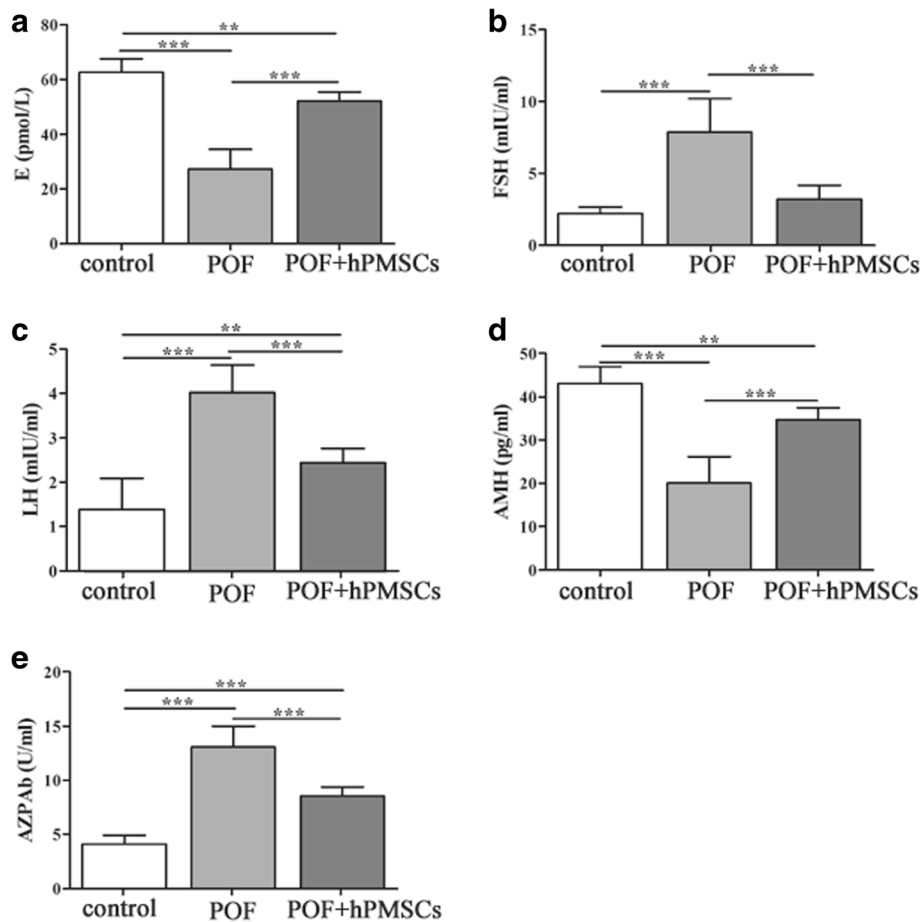


Fig. 4 Effects of pZP3 treatment on serum **a** E₂, **b** FSH, **c** LH, **d** AMH and **e** AzpAb Concentration in mice with or without hPMSC transplantation. Values expressed as mean ± SEM (n = 24). **P < 0.01, ***P < 0.001 indicate the statistically significant difference between the groups. E₂ estradiol, FSH follicle stimulating hormone, LH luteinizing hormone, AMH anti-Müllerian hormone, AzpAb anti-zona pellucida antibodies, hPMSC human placenta mesenchymal stem cell, POF premature ovarian failure

membrane and umbilical cord and demonstrated some protective effects on POF ovarian injury caused by chemotherapy [18–20]. Additionally, human placenta mesenchymal stem cells (hPMSCs) have become widely used in research because of their abundant source, easy collection, culture in vitro, convenient induction and expansion, low immunogenicity, no oncogenicity and ethical restriction [8]. Also, hPMSCs were regulated by estrogen and progesterone because of progesterone receptor and estrogen receptor alpha expression under physiological conditions [21]. In the current study, the cultured hPMSCs were injected into the POF mice via the tail vein to investigate their role and mechanisms in the treatment of POF. The results showed that the atretic follicle number significantly reduced but mature follicles increased, while follicles at all levels began to appear after hPMSC transplantation. The granulosa cells in the ovary increased considerably. In comparison, apoptosis cells are dramatically decreased in the hPMSC

transplantation group compared to the control group. To assess an individual's ovarian reserve, FSH and estradiol (E₂) levels in the serum at the early follicular phase have been measured. In our study, the serum levels of FSH and LH in the hPMSC transplantation group were reduced, but the E₂ level was increased. These statistics imply that hPMSC transplantation plays a vital role in the recovery of ovarian function in POF mice.

The regulation of follicular development was mainly affected by the local cytokines of the ovary, and the interactions between the granulosa cells and the oocytes played an important role in regulation [22–24]. AMH is one factor of the transforming growth factor beta (TGF-β) superfamily. AMH had a particular inhibitory effect on follicular development and primordial follicle recruitment. It also participates in selection of the dominant follicles and plays an important role in follicle growth [25, 26]. It had been shown that the TGF-β/Smad signaling pathway is an essential way to regulate follicular

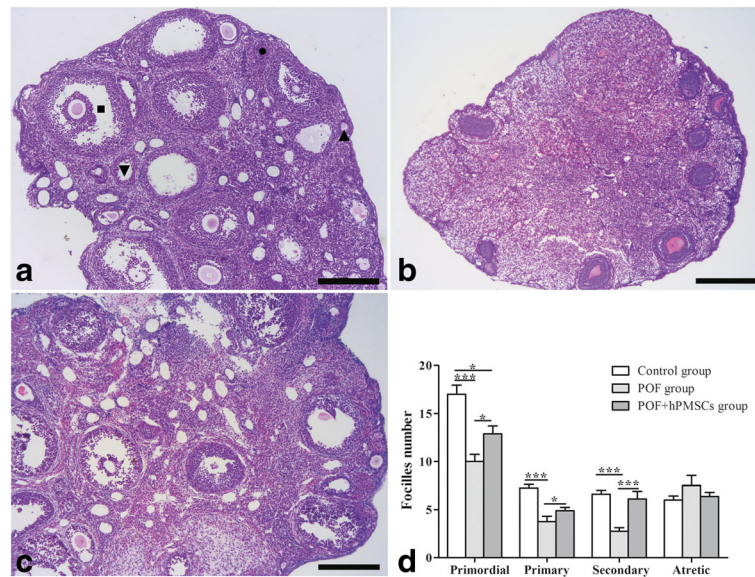


Fig. 5 Histopathological examination and follicle counts in ovaries. **a** Control group. **b** POF group. **c** hPMSC treatment group. **d** Summary of follicle count from the ovaries of each group. The following different types of ovarian follicles were observed: primordial follicle (\blacktriangle), primary follicle (\blacktriangledown), secondary follicle (\blacksquare), atretic follicle (\bullet). Magnification $\times 100$. Scale bar: 200 μm . Data presented as mean \pm SD. $*P < 0.05$, $***P < 0.001$ indicates the statistically significant difference between the groups with and without pZP3 treatment. hPMSC human placenta mesenchymal stem cell, POF premature ovarian failure

development [27, 28]. AMH is expressed in granulosa cells rather than membrane cells, oocytes and ovarian stromal cells. It has greatest expression in granulosa cells of preantral and small antral follicles (diameter < 4 mm). There is almost no AMH expression in the antral follicles with a diameter of 4–8 mm [29–31]. In addition, there will be no AMH expression when follicles become atretic.

In our study, the data showed that AMH was expressed in the antral and preantral follicles by immunohistochemical analysis. The serum AMH level was basically consistent with the quantitative analysis of AMH in the ovaries by immunohistochemistry and western blot analysis. The study conducted by Ingraham et al. [32] showed that AMH receptor was expressed only in the gonads and that AMH played a role in follicular

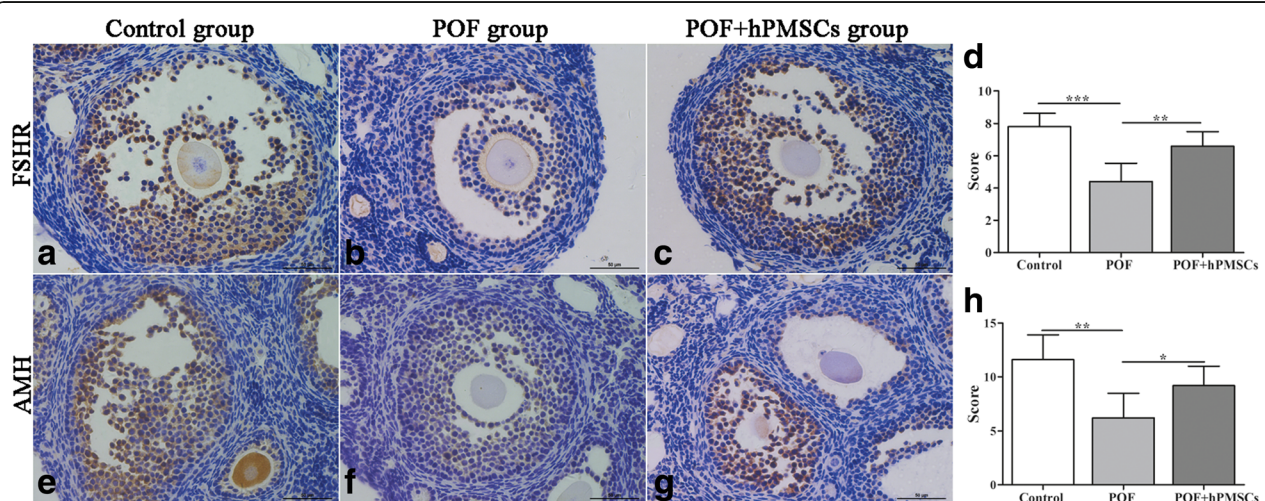


Fig. 6 Effects of hPMSC transplantation on AMH and FSHR expression in ovarian tissues by immunochemistry analysis. Cells with **a–d** FSHR and **e–h** AMH expression shown brown in the cytoplasm. Cell nucleus stained blue. Data expressed as mean \pm SD. Statistical differences between the groups: $*P < 0.05$, $**P < 0.01$, $***P < 0.001$. Scale bar: 50 μm . Magnification $\times 400$. FSHR follicle stimulating hormone receptor, AMH anti-Müllerian hormone, hPMSC human placenta mesenchymal stem cell, POF premature ovarian failure

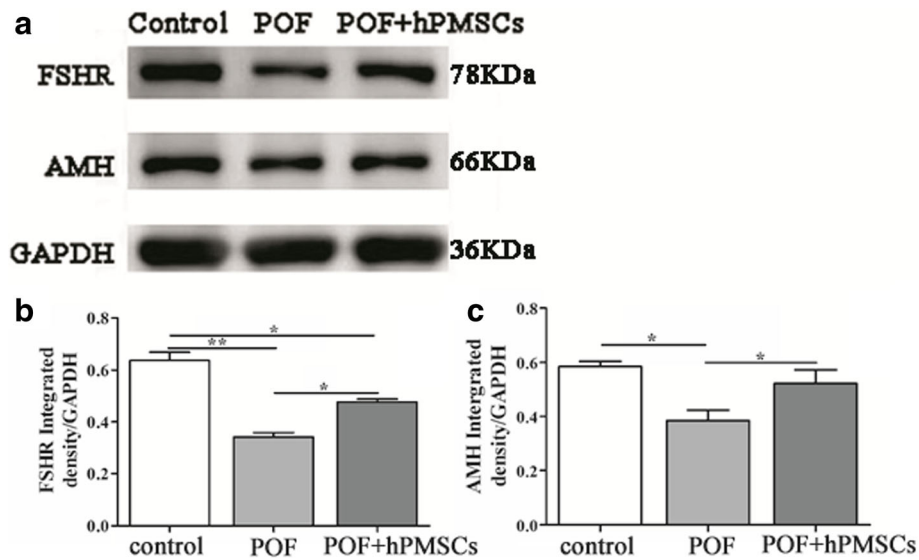


Fig. 7 AMH and FSHR expression in the ovaries by western blot analysis. **a** Representative image of western blot analysis. Quantization on **b** FSHR and **c** AMH protein expression. The housekeeping gene was GAPDH used to quantitate protein expression. ImageJ software used to quantitate the intensity of AMH and FSHR. * $P < 0.05$, ** $P < 0.01$ indicates significant differences among three groups. Data expressed as mean \pm SEM. FSHR follicle stimulating hormone receptor, AMH anti-Müllerian hormone, hPMSC human placenta mesenchymal stem cell, POF premature ovarian failure

development in a paracrine or autocrine manner. Also, studies have shown that the level of AMH in serum is closely related to the number of primordial follicles and growing follicles. The number of ovarian primordial follicles in the POF mouse model decreased, which may be due to the fact that the decreased level of AMH in serum increased the number of primordial follicles becoming the growing follicles, and decreased the number of the primordial follicles, resulting in premature depletion of the primordial follicle pool.

As reported, the follicles become atretic when 10% of granulosa cells have undergone apoptosis [33]. This indicates that granulosa cell apoptosis plays a vital role in the development of follicular atresia. Our study showed that the number of apoptotic granulosa cells and atretic follicles in POF mice was significantly increased compared to the control mice. However, the apoptotic granulosa cells and atretic follicles were decreased after the hPMSC treatment, while other types of follicles appeared in the ovaries, which suggested that hPMSCs

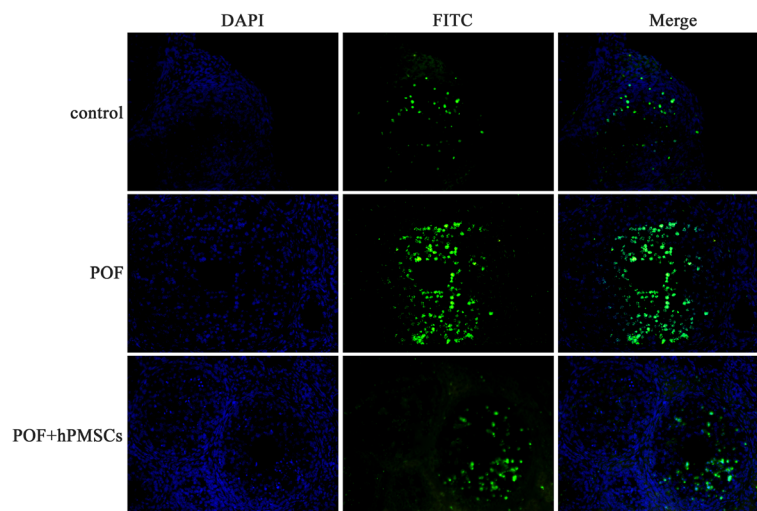


Fig. 8 Apoptosis of granulosa cells in ovarian tissues measured by TUNEL analysis. Apoptotic cells shown as green fluorescence with FITC staining. The nucleus was stained with DAPI, shown as blue fluorescence. Magnification $\times 400$. DAPI 4',6'-diamidino-2-phenylindole, hPMSC human placenta mesenchymal stem cell, POF premature ovarian failure

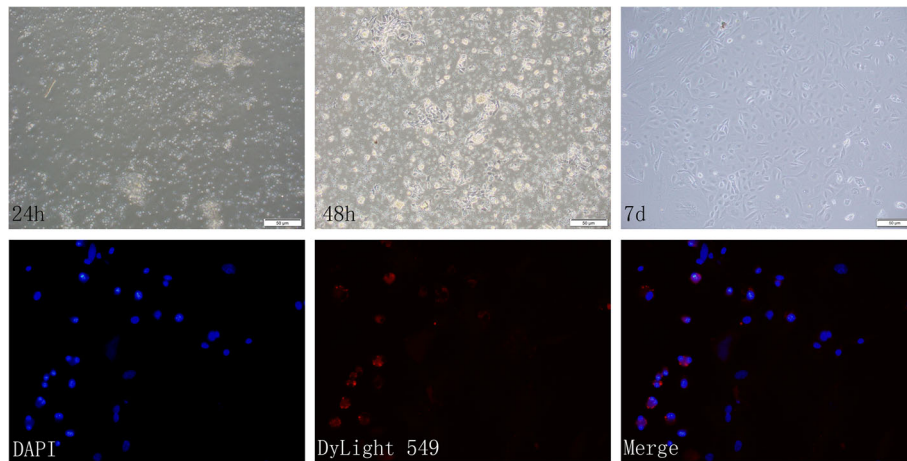


Fig. 9 Morphological changes of granulosa cell culture. FSHR expression in cells under fluorescent microscope. blue, DAPI. red, DyLight 549. Scale bar: 50 μ m. Magnification \times 400. DAPI 4',6-diamidino-2-phenylindole

may act on AMH expression through the cytokines secreted from granulosa cells. In addition, our study showed that the protein expression of FSHR in the ovaries of POF mice significantly increased, but decreased after hPMSC treatment. Inhibition of FSHR expression in POF mice following hPMSC treatment may be mediated by AMH. This is consistent with the report

that AMH can reduce FSHR mRNA levels in human granulosa cells [24].

To further clarify the role of hPMSCs in improving the ovarian reserve via mediating granulosa cell apoptosis and AMH expression, we conducted the study by culturing granulosa cells with SiAmh interference. Since FSHR was only expressed in granulosa cells, the

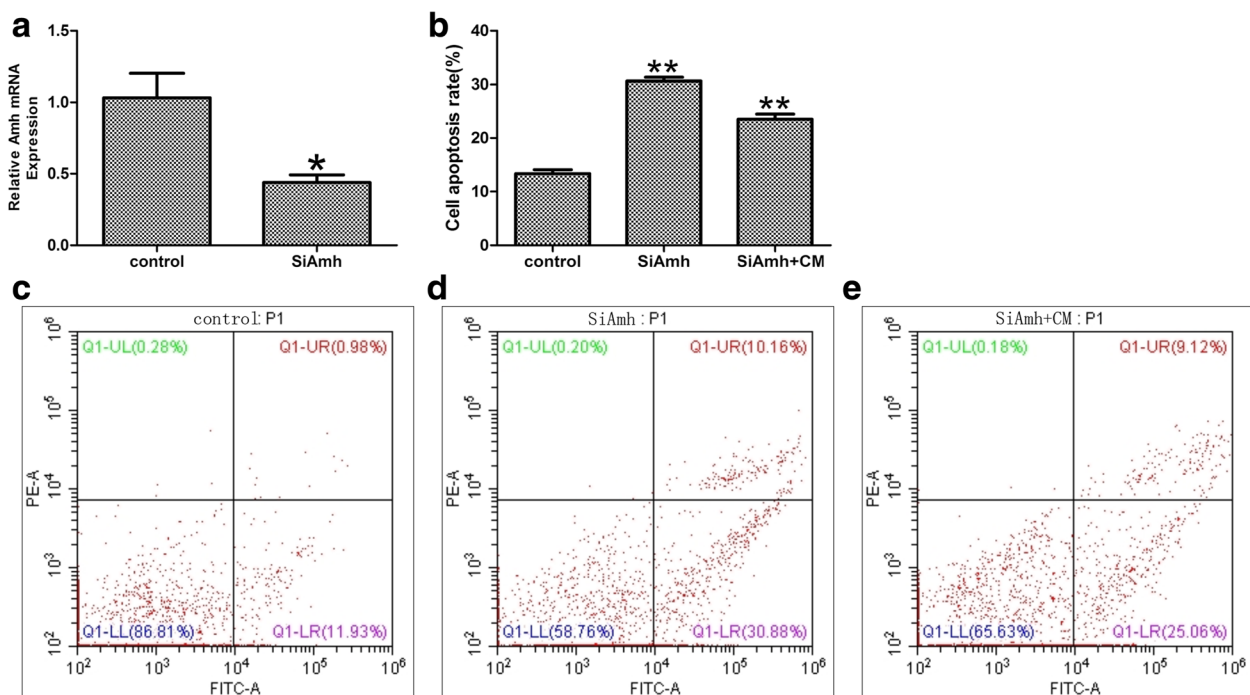


Fig. 10 Relative Amh mRNA expression after SiAmh interference and the apoptosis rate of granulosa cells measured by flow cytometry. **a** Relative level of Amh mRNA in granulosa cells after transfection of siAmh. * $P < 0.05$. **b** Comparison of percentage of apoptotic cells in the three groups. ** $P < 0.01$. Apoptosis percentage of granulosa cells in the **c** control group, **d** SiAmh group and **e** SiAmh + CM group. SiAmh? small interfering Amh; CM: conditioned medium

immunofluorescence method was used to confirm the cell type of granulosa cells in culture. The results of SiAmh interference and PCR analysis showed that AMH expression was significantly reduced but apoptosis granulosa cells were increased. The data suggest that AMH was involved in granulosa cell apoptosis. When granulosa cells were incubated with hPMSC supernatant after SiAmh interference, granulosa cell apoptosis was significantly reduced. This suggested that cytokines secreted by hPMSCs may be involved in the inhibition of granulosa cell apoptosis due to Amh mutation. The results from the in-vitro study support the results obtained from the in-vivo study. This further demonstrates that hPMSCs could reduce granulosa cell apoptosis and then enhance the ovarian reserve capacity via regulating AMH secretion and inhibiting granulosa cell apoptosis.

In summary, hPMSC transplantation can obviously improve the state of the serum levels of high gonadotropin and low estrogen of POF mice, promote follicular development, inhibit excessive follicular atresia and granular cell apoptosis, and improve the ovarian reserve capacity. These data demonstrate that the mechanisms of hPMSC transplantation promote ovarian function.

Conclusions

hPMSC transplantation could recover ovarian function through inhibition of granulosa cell apoptosis and follicular atresia by upregulation of AMH and FSHR expression of granulosa cells in POF mice. It has the potential to provide a promising therapeutic method for patients with POF in the clinic.

Additional file

Additional file 1: Presents isolation and culture of hPMSCs (DOCX 12 kb)

Abbreviations

AMH: Anti-Müllerian hormone; ANOVA: One-way analysis of variance; AzpAb: Anti-zona pellucida antibody; CFA: Complete Freund's adjuvant; DMEM: Dulbecco's modified Eagle's Medium; E₂: Estradiol; ELISA: Enzyme-linked immunosorbent assay; FCM: Flow cytometry; FIA: Freund's incomplete adjuvant; FSH: Follicle stimulating hormone; FSHR: Follicle stimulating hormone receptor; GC: Granulosa cell; hPMSC: Human placenta mesenchymal stem cell; LH: Luteinizing hormone; MSC: Mesenchymal stem cell; POF: Premature ovarian failure; pZP3: Zona pellucida 3 peptide; TGF- β : Transforming growth factor beta

Acknowledgements

The authors acknowledge Professor Luan Xiyang for technical guidance on human placenta mesenchymal stem cell culture and isolation.

Funding

This research was supported by grants from the Natural Science Foundation of Shandong (ZR2016HM77, ZR2017HM046).

Availability of data and materials

All data generated and/or analyzed during this study are included in this published article.

Authors' contributions

HQZ, QQL, YZ and WDY were in charge of the conception, study design and literature research. DW, LSZ and DLZ were in charge of the experimental studies. XYL, NY, YH and WZ were in charge of the experimental studies and data analysis/interpretation. HQZ, WDY, QQL and PCD were in charge of manuscript preparation and editing, revision, and final version approval of the manuscript. All authors read and approved the final version of the manuscript.

Authors' information

Not applicable

Ethics approval

All animal care and experimental procedures were performed according to the guide for the Care and Use of Laboratory Animals established by the National Research Council (National Academy Press Washington, DC, 1996), and were approved by the Institutional Animal Care and Use Committee of Binzhou Medical University. The use of human tissue was approved by the Institutional Ethics Committee.

Consent for publication

Not applicable

Competing interests

The authors declare that they have no competing interests.

Publisher's Note

Springer Nature remains neutral with regard to jurisdictional claims in published maps and institutional affiliations.

Author details

¹School of Basic Medical Sciences & Institute of Reproductive Diseases, Binzhou Medical University, Yantai, Shandong 264003, China. ²School of Basic Medical Sciences, Binzhou Medical University, Yantai 264003, China. ³Health School of Laiyang, Laiyang 265200, China. ⁴State Key Laboratory of Stem Cell and Reproductive Biology, Institute of Zoology, Chinese Academy of Sciences, Beijing 100101, China.

Received: 20 October 2017 Revised: 5 December 2017

Accepted: 7 December 2017 Published online: 31 January 2018

References

- de Moraes-Ruehsen M, Jones GS. Premature ovarian failure. *Fertil Steril*. 1967;18(4):440–61.
- Vujovic S, Ivovic M, Tancic-Gajic M, Marina L, Barac M, Arizanovic Z, et al. Premature ovarian failure. *Srp Arh Celok Lek*. 2012;140(11–12):806–11.
- Ikeme A, Okeke TC, Akogu S, Chinwuba N. Knowledge and perception of menopause and climacteric symptoms among a population of women in Enugu, South East, Nigeria. *Ann Med Health Sci Res*. 2011;1(1):31–6.
- Lutchman Singh K, Davies M, Chatterjee R. Fertility in female cancer survivors: pathophysiology, preservation and the role of ovarian reserve testing. *Hum Reprod Update*. 2005;11(1):69–89.
- Boucret L, Chao DLB, Moriniere C, Desquiret V, Ferre-L'Hotellier V, Descamps P, et al. Relationship between diminished ovarian reserve and mitochondrial biogenesis in cumulus cells. *Hum Reprod*. 2015;30(7):1653–64.
- Lie FS, Lugtenburg PJ, Schipper I, Themmen AP, de Jong FH, Sonneveld P, et al. Anti-müllerian hormone as a marker of ovarian function in women after chemotherapy and radiotherapy for haematological malignancies. *Hum Reprod*. 2008;23(3):674–8.
- Sassarini J, Lumsden MA, Critchley HO. Sex hormone replacement in ovarian failure—new treatment concepts. *Best Pract Res Clin Endocrinol Metab*. 2015;29(1):105.
- Chen CP. Placental villous mesenchymal cells trigger trophoblast invasion. *Cell Adh Migr*. 2014;8(2):94–7.
- Rhim SH, Millar SE, Robey F, Luo AM, Lou YH, Yule T, et al. Autoimmune disease of the ovary induced by a ZP3 peptide from the mouse zona pellucida. *J Clin Invest*. 1992;89(1):28.
- Fu L, Feng W, Li SR, Huang BY. ZP3 peptides administered orally suppress murine experimental autoimmune ovarian disease. *J Reprod Immunol*. 2007;75(1):40–7.
- Yin N, Zhao W, Luo QQ, Yuan WD, Luan XY, Zhang HQ. Restoring ovarian function with human placenta-derived mesenchymal stem cells in

- autoimmune-induced premature ovarian failure mice mediated by Treg Cells and associated cytokines. *Reprod Sci.* 2017;33:193371911773215.
12. Han S, Xiao Z, Li X, Zhao H, Wang B, Qiu Z, et al. Human placenta-derived mesenchymal stem cells loaded on linear ordered collagen scaffold improves functional recovery after completely transected spinal cord injury in canine. *Sci China Life Sci.* 2017;1–12. doi: <https://doi.org/10.1007/s11427-016-9002-6>.
 13. Johnson J, Canning J, Kaneko T, Pru JK, Tilly JL. Germline stem cells and follicular renewal in the postnatal mammalian ovary. *Nature.* 2004;428(6979):145–50.
 14. Gougeon A. Regulation of ovarian follicular development in primates: facts and hypotheses. *Endocr Rev.* 1996;17(2):121–55.
 15. Remmele W. Recommendation for uniform definition of an immunoreactive score (IRS) for immunohistochemical estrogen receptor detection (ER-ICA) in breast cancer tissue. *Pathologe.* 1987;8:138–40.
 16. Bradford MM. A rapid and sensitive method for the quantitation of microgram quantities of protein utilizing the principle of protein-dye binding. *Anal Biochem.* 1976;72(1–2):248–54.
 17. Kafshgiri SK, Parivar K, Baharara J, Kerachian MA, Hayati RN. Movento influences development of granulosa cells and ovarian follicles and FoxO1 and Vnn1 gene expression in BALB/c mice. *Iran J Basic Med Sci.* 2016;19(11):1209.
 18. Liu T, Huang Y, Guo L, Cheng W, Zou G. CD44+/CD105+ human amniotic fluid mesenchymal stem cells survive and proliferate in the ovary long-term in a mouse model of chemotherapy-induced premature ovarian failure. *Int J Med Sci.* 2012;9(7):592.
 19. Xiao GY, Liu IH, Cheng CC, Chang CC, Lee YH, Cheng WT, et al. Amniotic fluid stem cells prevent follicle atresia and rescue fertility of mice with premature ovarian failure induced by chemotherapy. *PLoS One.* 2014;9(9):e106538.
 20. Wang S, Yu L, Sun M, Mu S, Wang C, Wang D, et al. The therapeutic potential of umbilical cord mesenchymal stem cells in mice premature ovarian failure. *Biomed Res Int.* 2013;690491. doi: <https://doi.org/10.1155/2013/690491>.
 21. Han K, Lee JE, Kwon SJ, Park SY, Shim SH, Kim H, et al. Human amnion-derived mesenchymal stem cells are a potential source for uterine stem cell therapy. *Cell Prolif.* 2008;41(5):709–25.
 22. Inal MM, Incebiyik A, Sancı M, Yıldırım Y, Polat M, Pilancı B, et al. Ovarian cysts in tamoxifen-treated women with breast cancer. *Eur J Obstet Gynecol Reprod Biol.* 2005;120(1):104–6.
 23. Ceccconi S, Ciccarelli C, Barberi M, Macchiarelli G, Canipari R. Granulosa cell-oocyte interactions. *Eur J Obstet Gynecol Reprod Biol.* 2004;115:519–22.
 24. Shaw JL, Dey SK, Critchley HO, Horne AW. Current knowledge of the aetiology of human tubal ectopic pregnancy. *Hum Reprod Update.* 2010;16(4):432–44.
 25. Pellatt L, Rice S, Dilaver N, Heshri A, Galea R, Brincat M, et al. Anti-Müllerian hormone reduces follicle sensitivity to follicle-stimulating hormone in human granulosa cells. *Fertil Steril.* 2011;96(5):1246–51. e1.
 26. La Marca A, Volpe A. Anti-Müllerian hormone (AMH) in female reproduction: is measurement of circulating AMH a useful tool? *Clin Endocrinol.* 2006;64(6):603–10.
 27. Knight PG, Glister C. TGF- β superfamily members and ovarian follicle development. *Reproduction.* 2006;132(2):191–206.
 28. Wang W, Koka V, Lan HY. Transforming growth factor- β and Smad signalling in kidney diseases. *Nephrology.* 2005;10(1):48–56.
 29. Weenen C, Laven JS, Von Bergh AR, Cranfield M, Groome NP, Visser JA, et al. Anti-Müllerian hormone expression pattern in the human ovary: potential implications for initial and cyclic follicle recruitment. *Mol Hum Reprod.* 2004;10(2):77–83.
 30. Ueno S, Takahashi M, Manganaro TF, Ragin RC, Donahoe PK. Cellular localization of mullerian inhibiting substance in the developing rat ovary. *Endocrinology.* 1989;124(2):1000–6.
 31. Durlinger AL, Gruijters MJ, Kramer P, Karels B, Ingraham HA, Nachtigal MW, et al. Anti-Müllerian hormone inhibits initiation of primordial follicle growth in the mouse ovary. *Endocrinology.* 2002;143(3):1076–84.
 32. Ingraham HA, Hirokawa Y, Roberts LM, Mellon SH, McGee E, Nachtigal MW, et al. Autocrine and paracrine Müllerian inhibiting substance hormone signaling in reproduction. *Recent Prog Horm Res.* 2000;55:53–67. discussion 67–68.
 33. Fu X, He Y, Xie C, Liu W. Bone marrow mesenchymal stem cell transplantation improves ovarian function and structure in rats with chemotherapy-induced ovarian damage. *Cytotherapy.* 2008;10(4):353–63.

Submit your next manuscript to BioMed Central and we will help you at every step:

- We accept pre-submission inquiries
- Our selector tool helps you to find the most relevant journal
- We provide round the clock customer support
- Convenient online submission
- Thorough peer review
- Inclusion in PubMed and all major indexing services
- Maximum visibility for your research

Submit your manuscript at
www.biomedcentral.com/submit

